

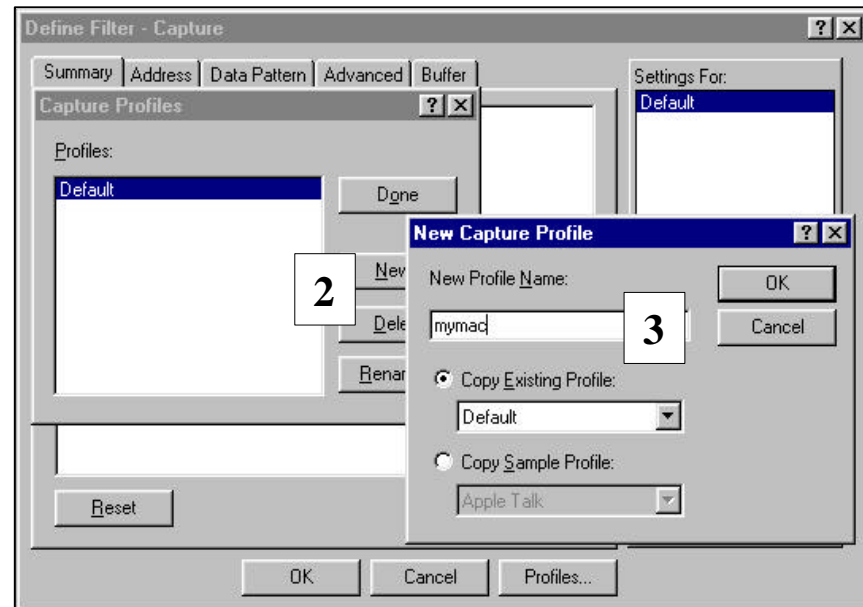
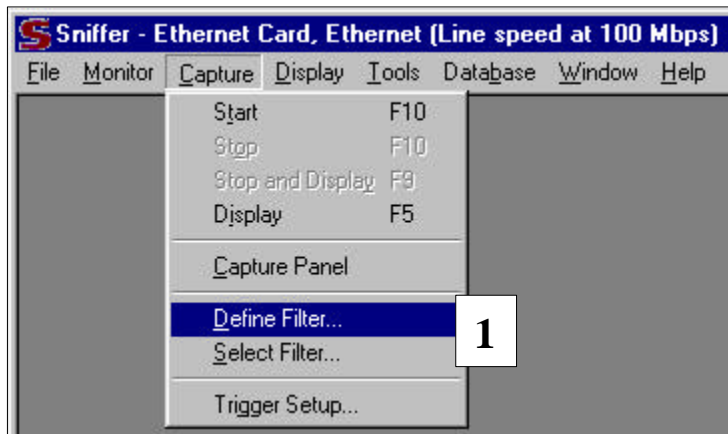
# How To Define A MYMAC Capture Filter Using NAI Sniffer Pro

- Why bother creating a MAC filter for your own card?
  
- I will explain various benefits for this approach;
  - ✓ By removing all the broadcast or extraneous traffic from your port, you have fewer packets to wade through.
  - ✓ Great way to learn how things really work versus what you think device should do.
  - ✓ By using your PC, on your network, with your apps and your tribal knowledge of device addresses and role, you can quickly learn what the packets are trying to spell out.
  - ✓ If you do find something to investigate and you **optimize** things, why not have you benefit first?
  - ✓ By casually using a protocol analyzer, you'll be in fine fighting form when a problem occurs.

# Define A Profile



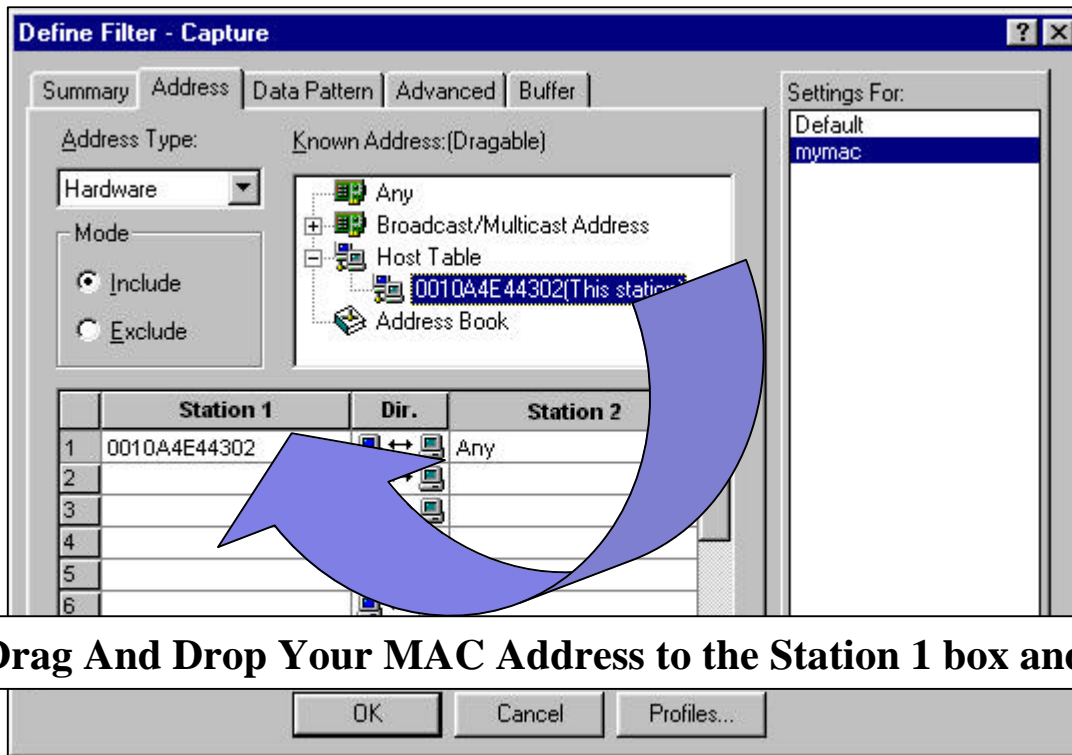
As with most protocol analyzers, I always scream about leaving the defaults alone. If you find yourself questioning the default settings, you can always select “Default” and press the “RESET” button in the “Define Filter” panel. We’ll call this Profile “maymac”.



# Add Your MAC Address And Start Sniffing



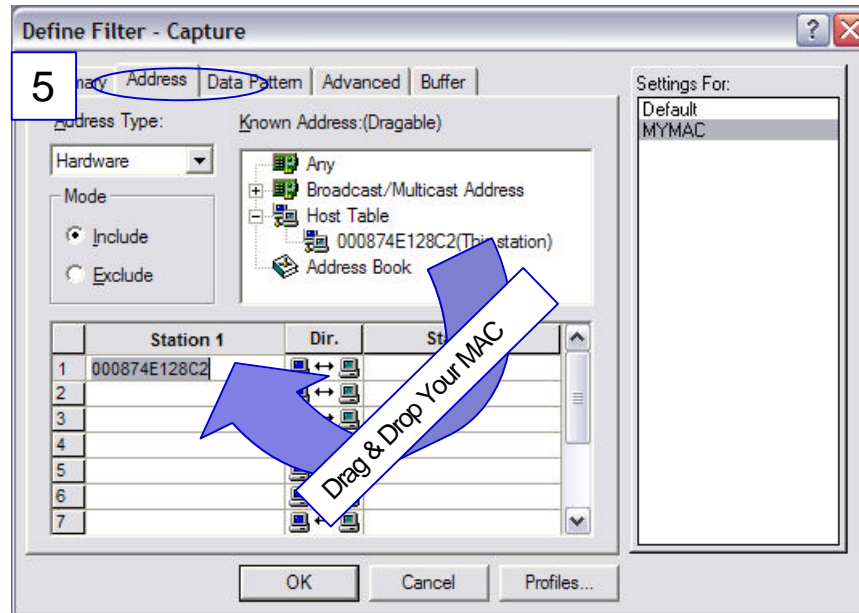
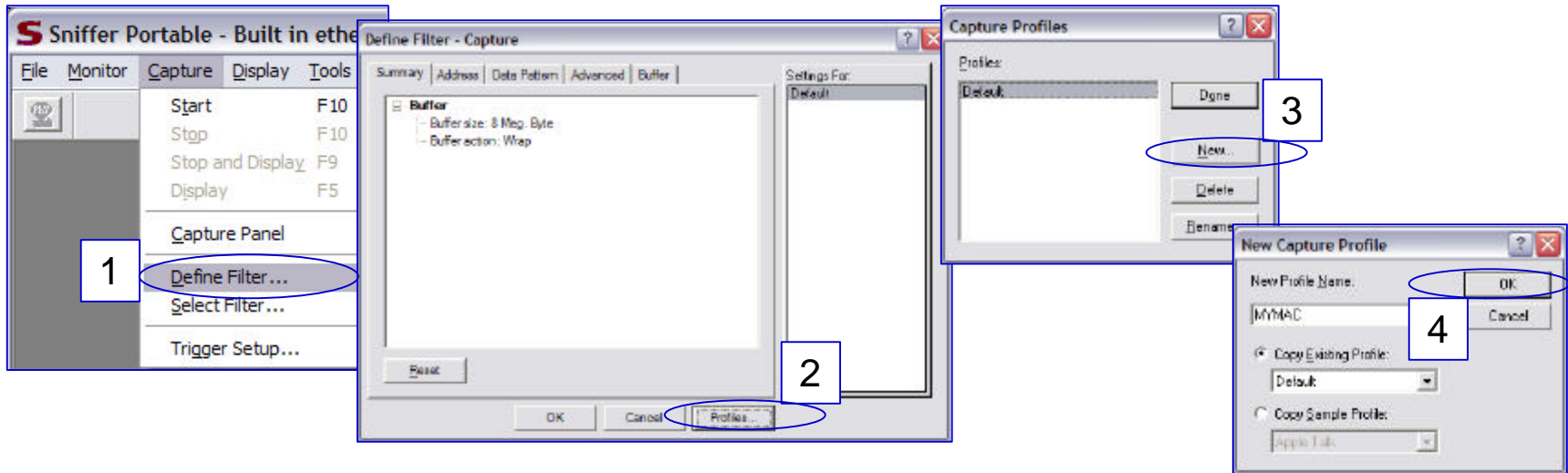
- With Sniffer Pro you can easily find out your MAC address and drag it to the “Station 1” box.



**Drag And Drop Your MAC Address to the Station 1 box and click OK.**

- To quickly find out if a filter is in use, simply glance at the bottom left corner for the following note: 

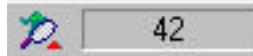
# MYMAC Filter



# Well What Are You Waiting for?



- Now simply start an app of your choice and start poking around.
- If you want a big tip, note the packet counter in the bottom right corner when you are interacting with the app.



- I will be writing up more slides on what you can do next.

